

1 μ m
H

Mag = 5.00 K X

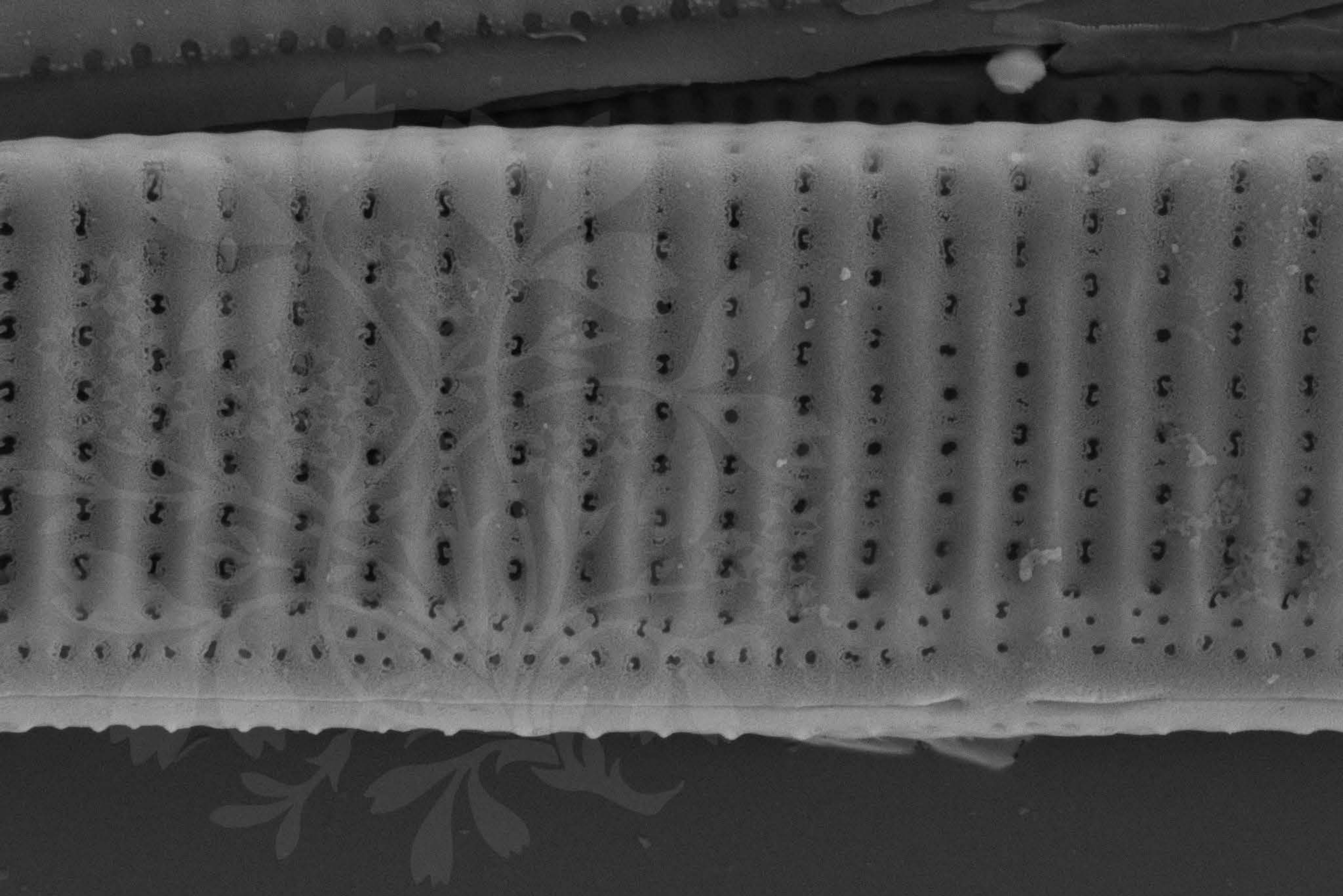
EHT = 5.00 kV

Signal A = SE2 Date :6 Jul 2015

WD = 4.4 mm

File Name = BC0469_01.tif





200 nm



Mag = 35.00 K X

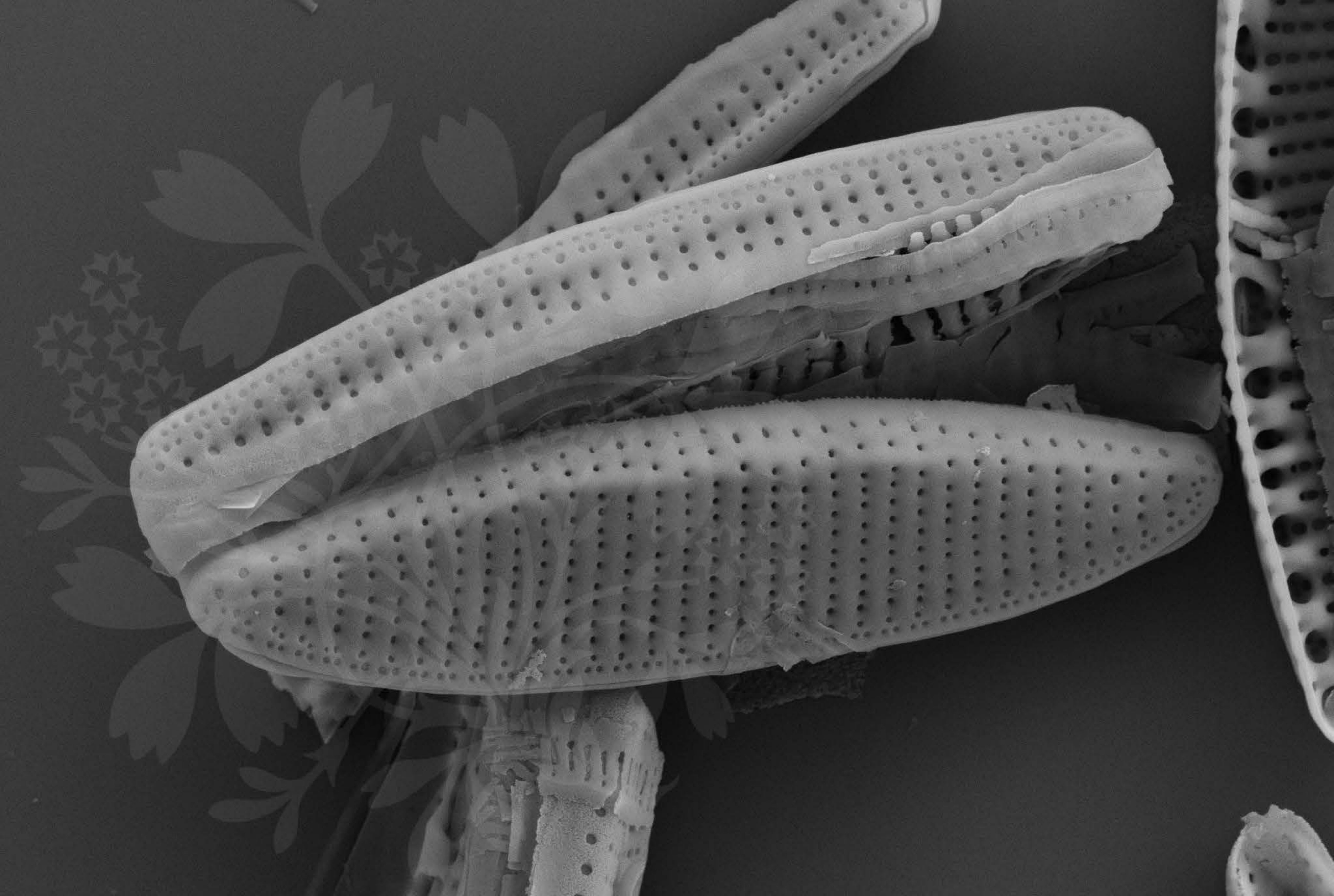
EHT = 5.00 kV

Signal A = SE2 Date :6 Jul 2015

WD = 4.4 mm

File Name = BC0469_02.tif





1 μ m

Mag = 15.00 K X

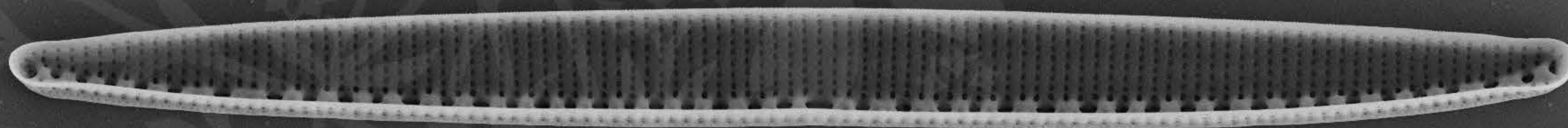
EHT = 5.00 kV

Signal A = SE2 Date :6 Jul 2015

WD = 4.4 mm

File Name = BC0469_03.tif





1 μ m
H

Mag = 5.00 K X

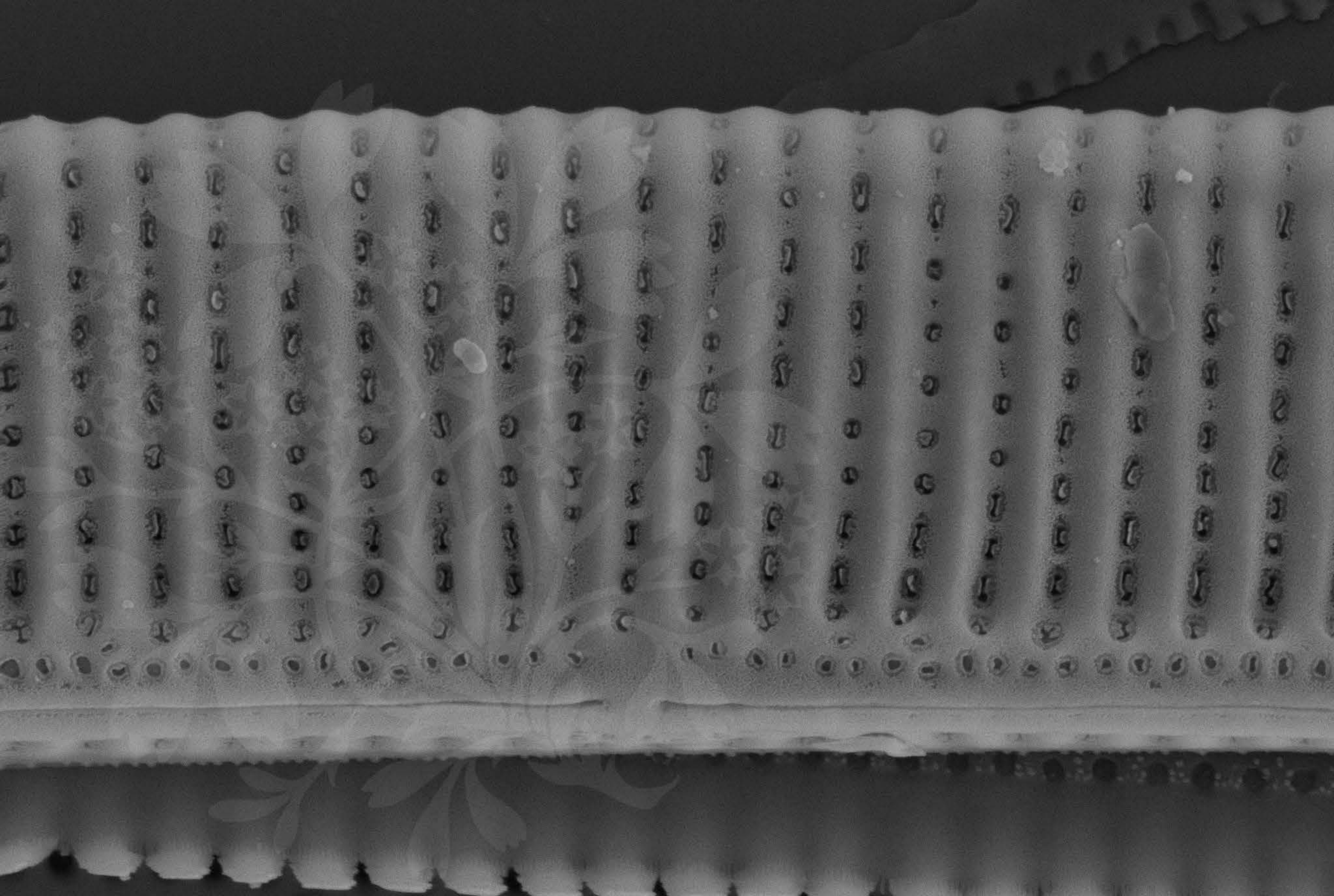
EHT = 5.00 kV

Signal A = SE2 Date :6 Jul 2015

WD = 4.4 mm

File Name = BC0469_04.tif





200 nm



Mag = 35.00 K X

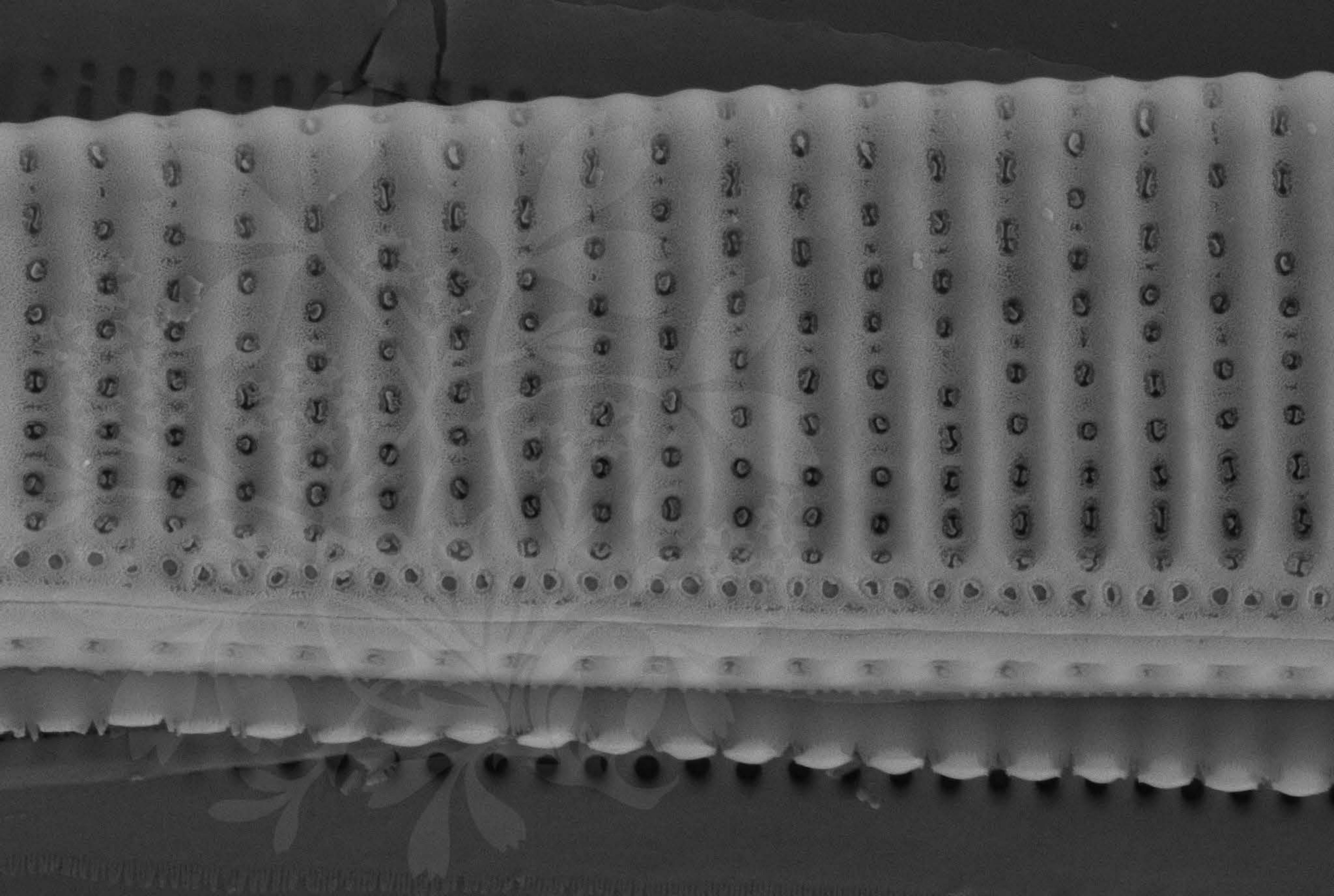
EHT = 5.00 kV

Signal A = SE2 Date :6 Jul 2015

WD = 4.4 mm

File Name = BC0469_05.tif





200 nm



Mag = 34.40 K X

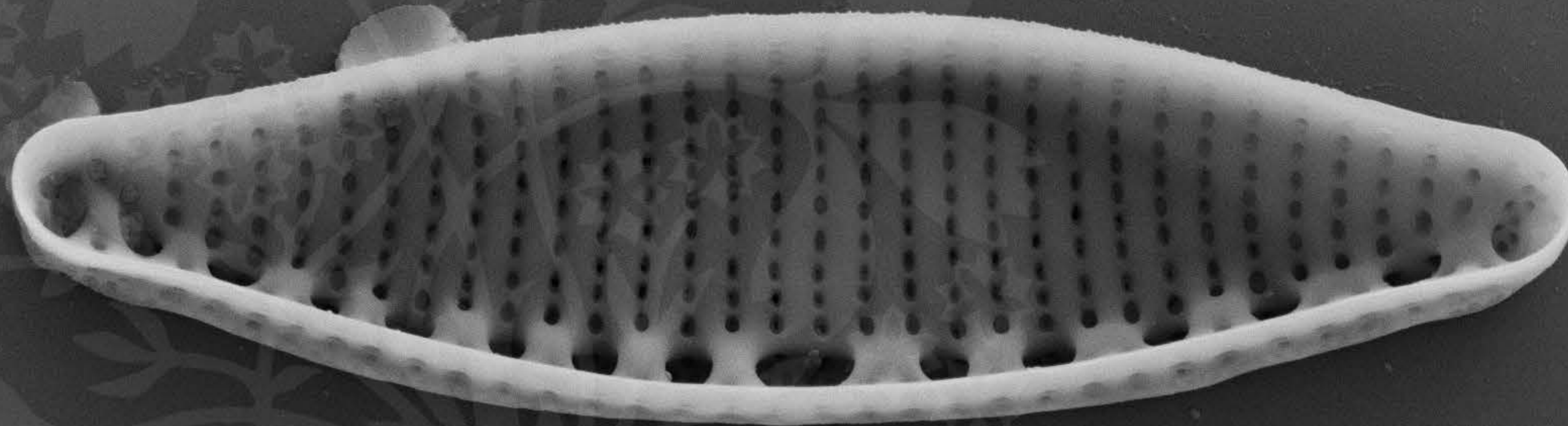
EHT = 5.00 kV

Signal A = SE2 Date :6 Jul 2015

WD = 4.4 mm

File Name = BC0469_06.tif





1 μm
|-----|

Mag = 14.00 K X

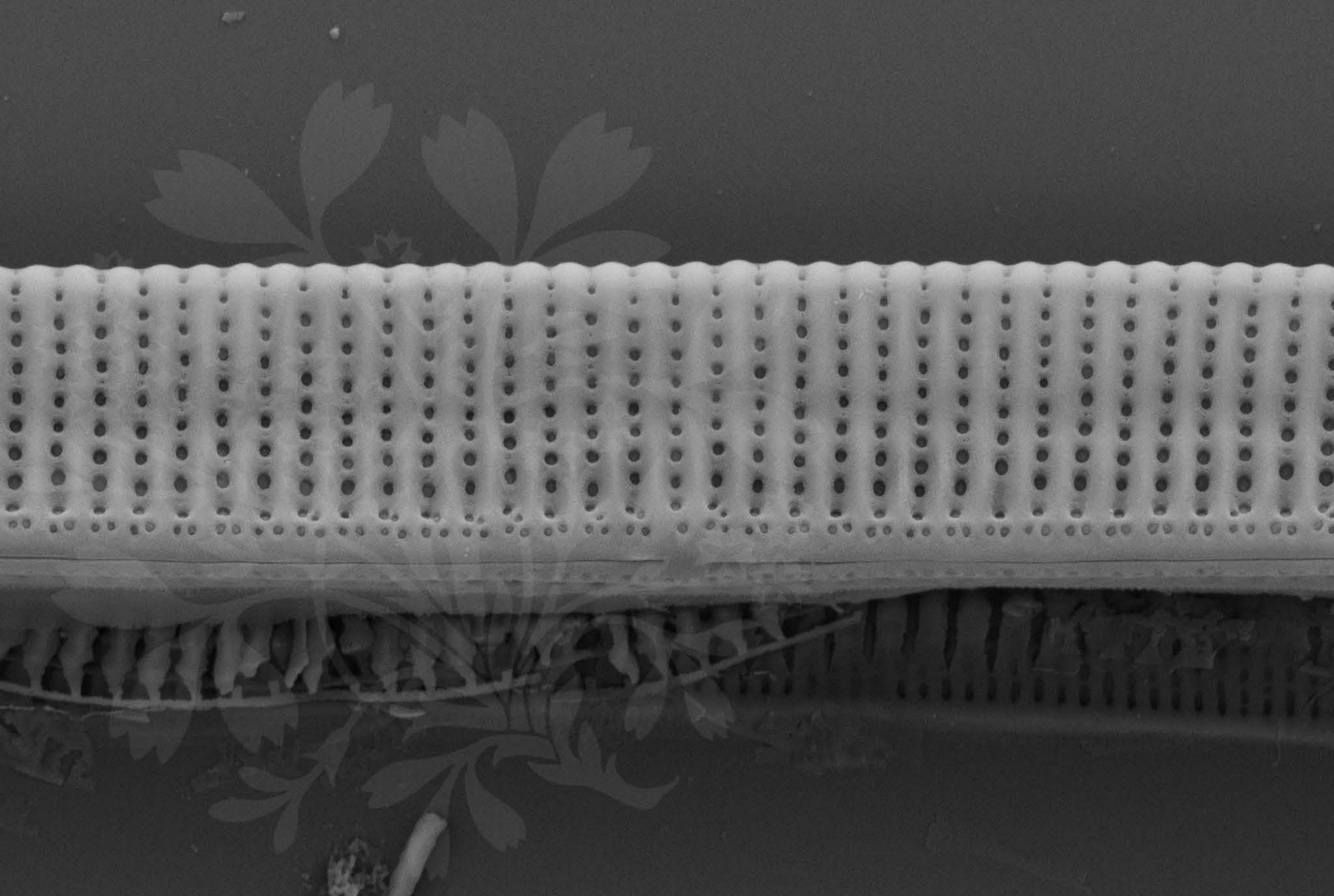
EHT = 5.00 kV

Signal A = SE2 Date :6 Jul 2015

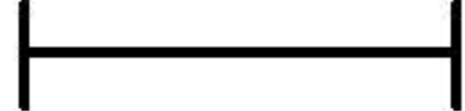
WD = 4.4 mm

File Name = BC0469_07.tif





1 μm



Mag = 20.00 K X

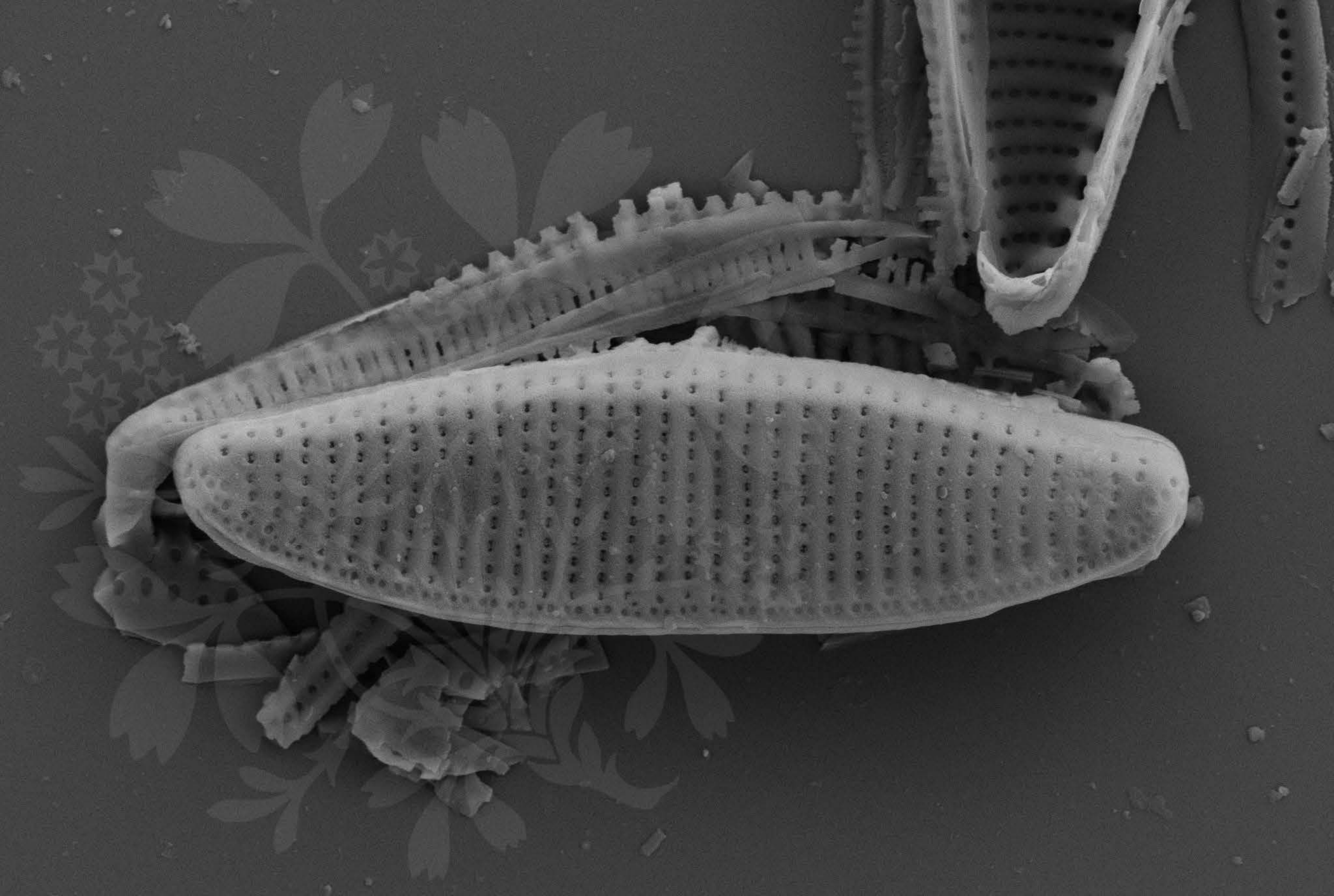
EHT = 5.00 kV

Signal A = SE2 Date :6 Jul 2015

WD = 4.4 mm

File Name = BC0469_08.tif





1 μ m
|-----|

Mag = 14.00 K X

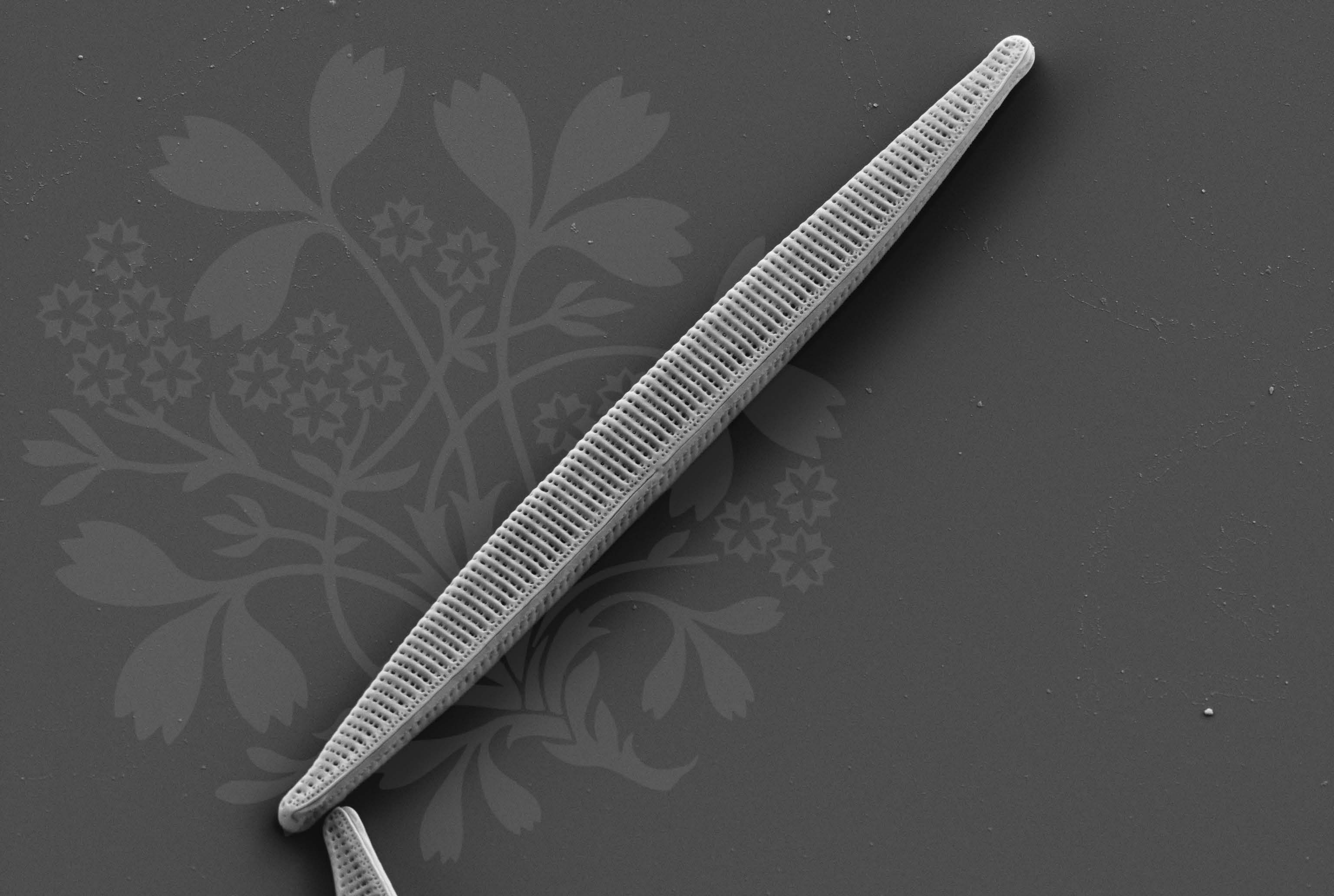
EHT = 5.00 kV

Signal A = SE2 Date :6 Jul 2015

WD = 4.4 mm

File Name = BC0469_09.tif





2 μ m
┌───┐

Mag = 5.50 K X

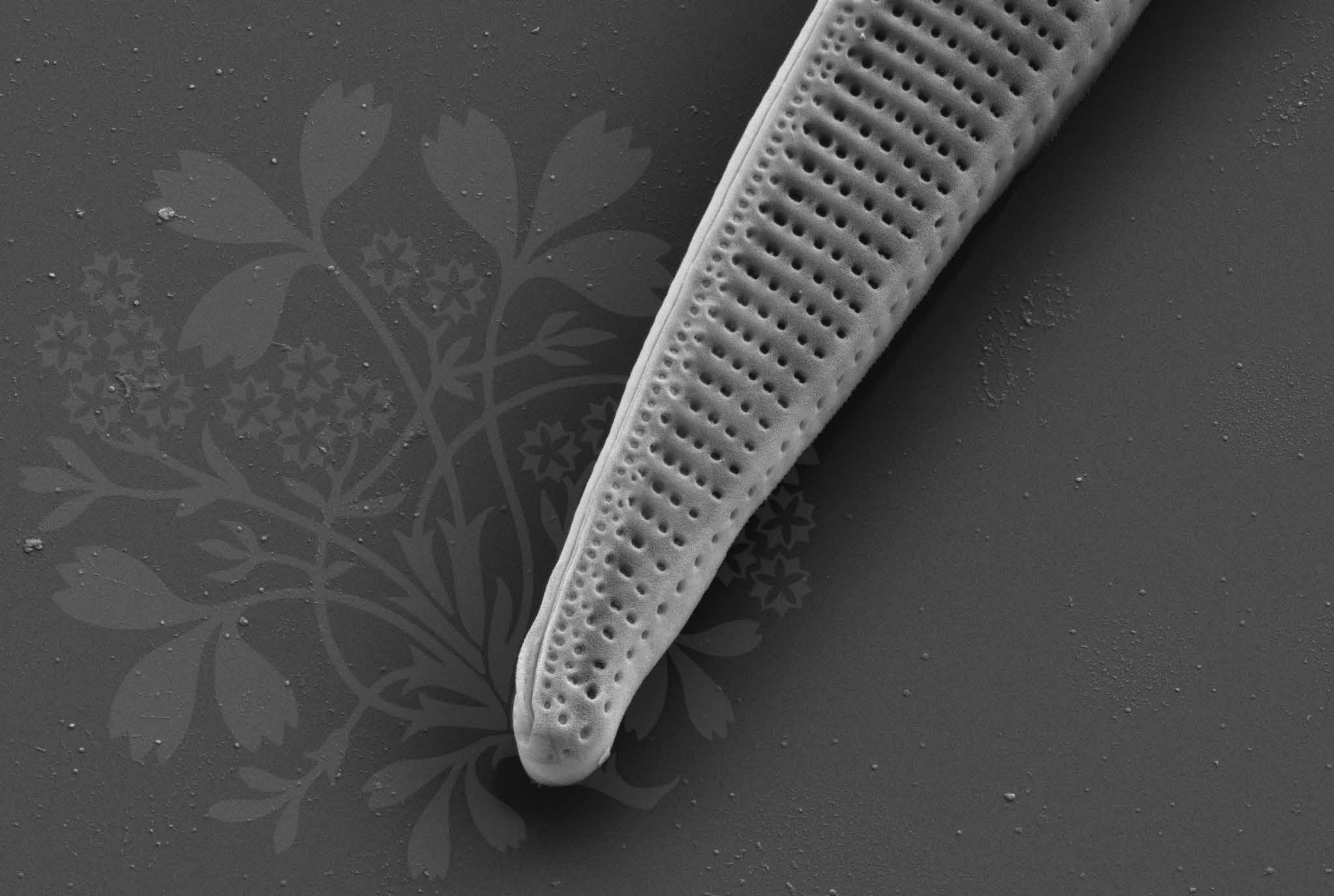
EHT = 5.00 kV

Signal A = SE2 Date :11 Nov 2015

WD = 4.3 mm

File Name = BC0469_10.tif





1 μm
|-----|

Mag = 16.00 K X

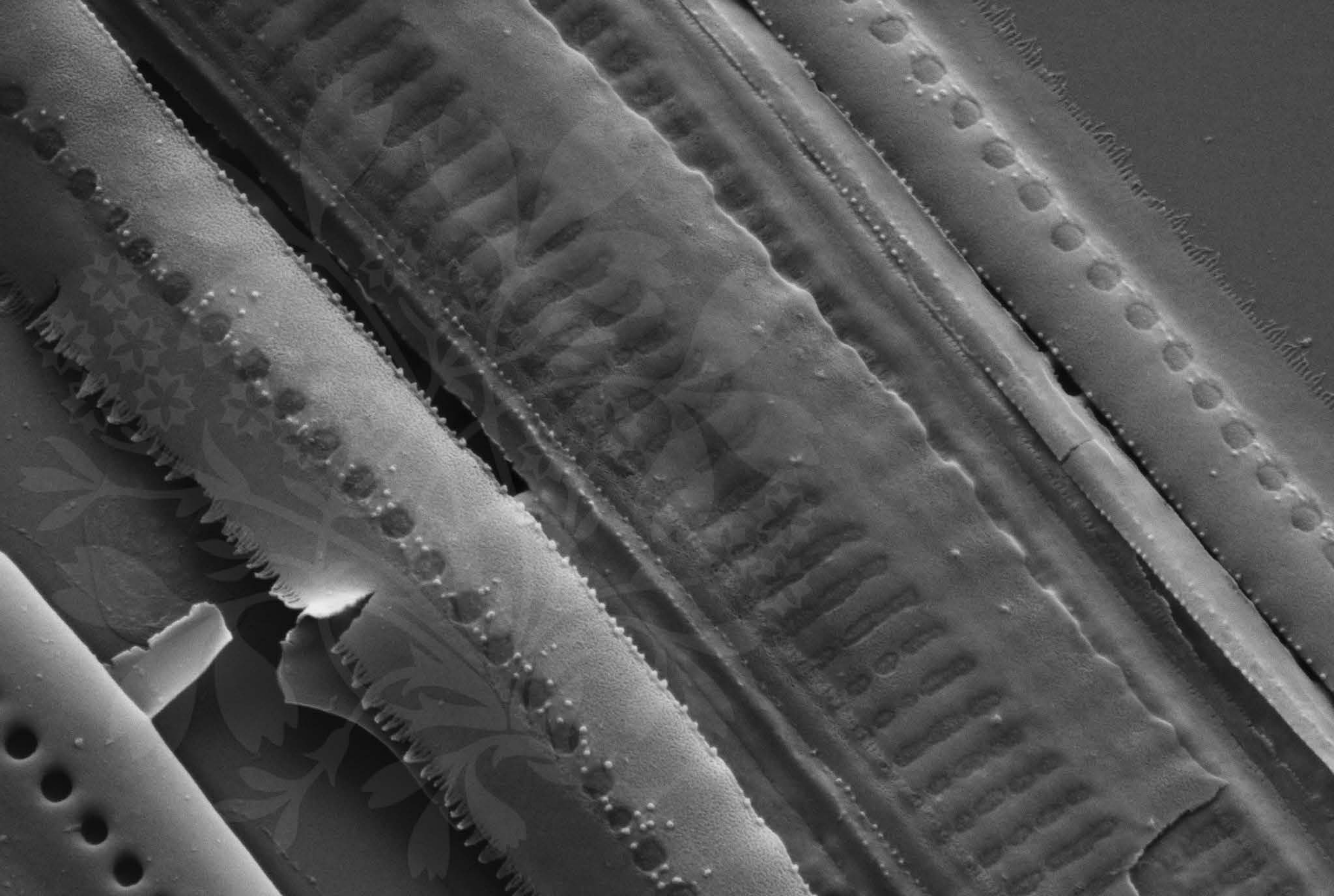
EHT = 5.00 kV

Signal A = SE2 Date :11 Nov 2015

WD = 4.3 mm

File Name = BC0469_11.tif





200 nm



Mag = 40.00 K X

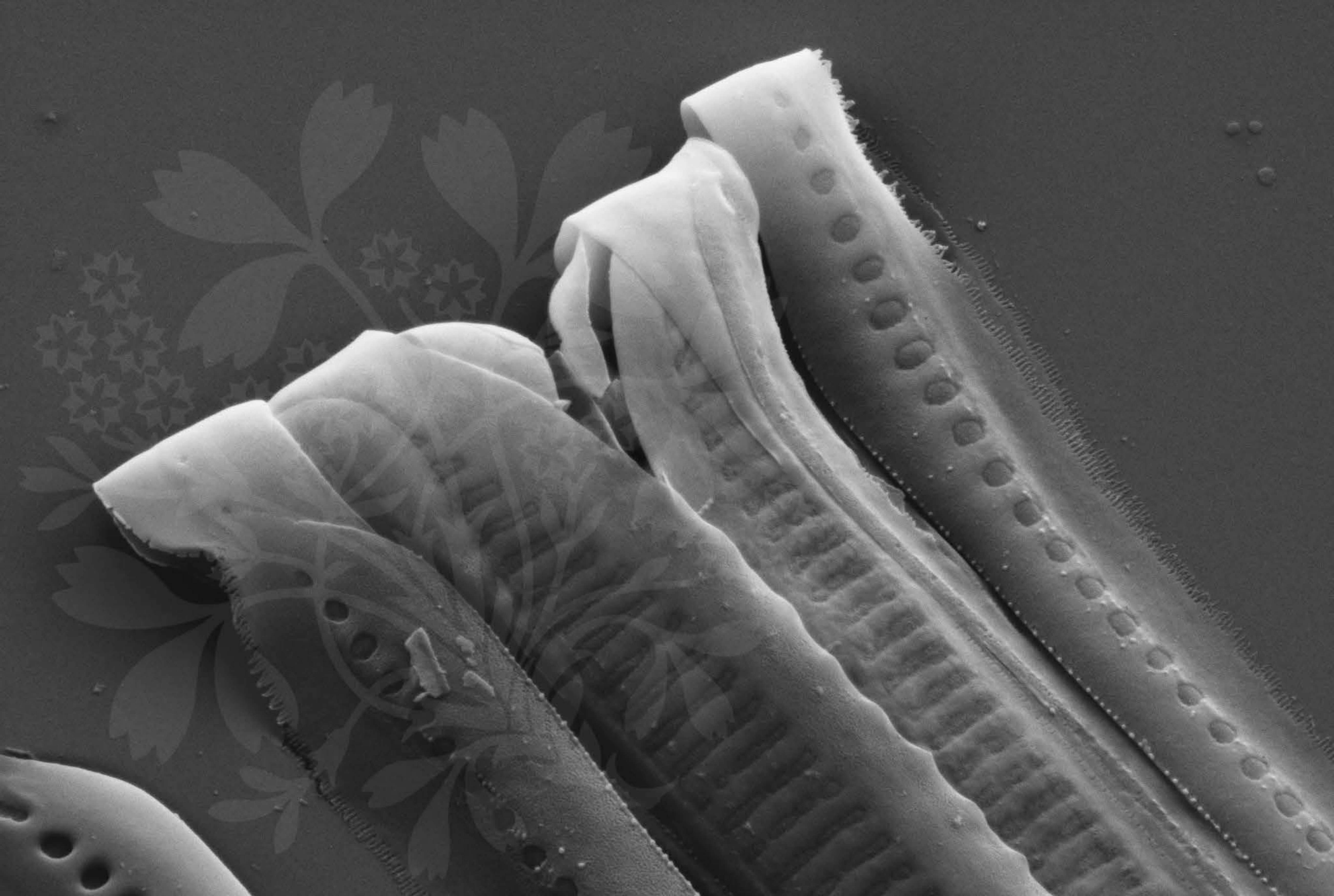
EHT = 5.00 kV

Signal A = SE2 Date :11 Nov 2015

WD = 4.3 mm

File Name = BC0469_12.tif





200 nm



Mag = 35.00 K X

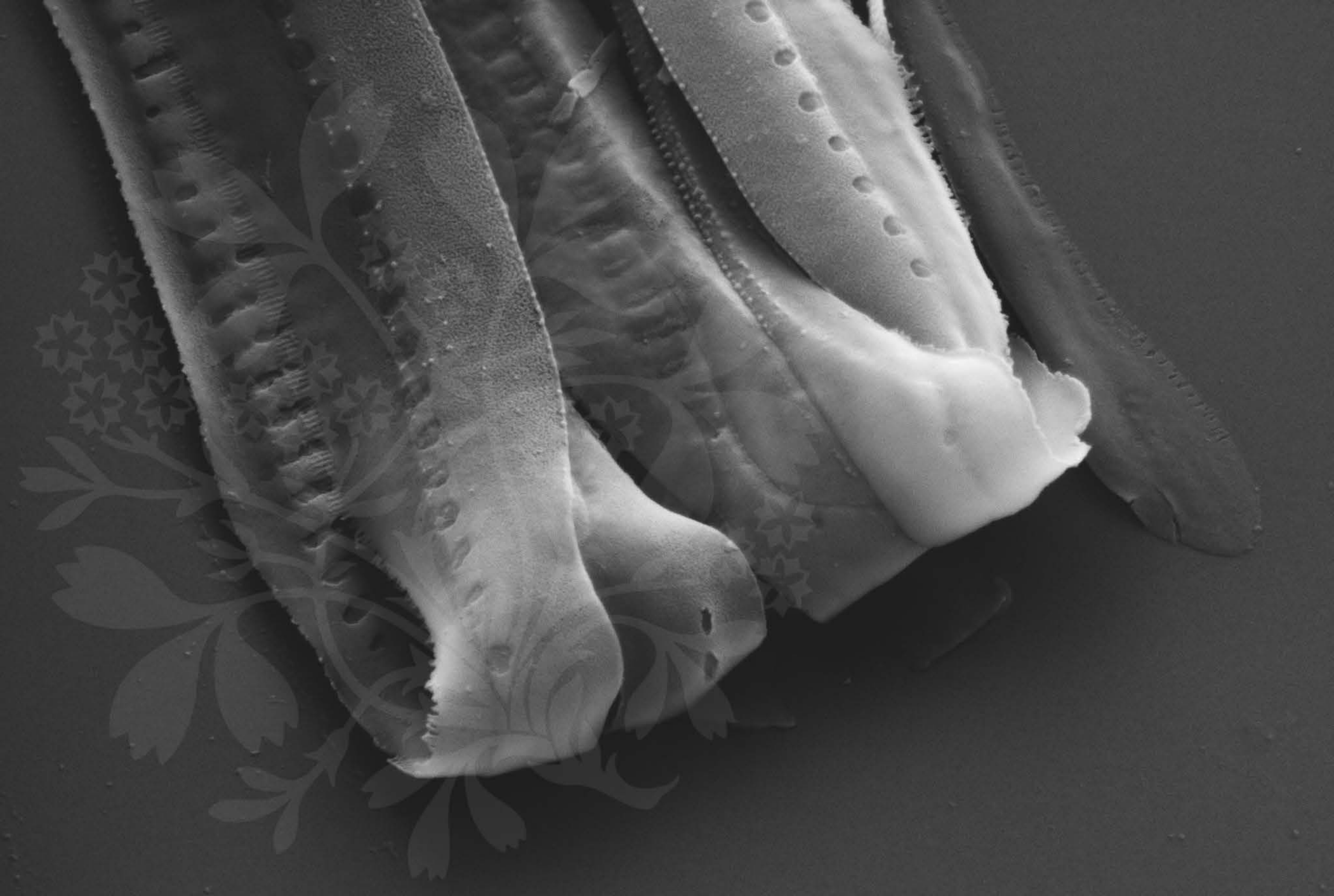
EHT = 5.00 kV

Signal A = SE2 Date :11 Nov 2015

WD = 4.3 mm

File Name = BC0469_13.tif





200 nm



Mag = 40.00 K X

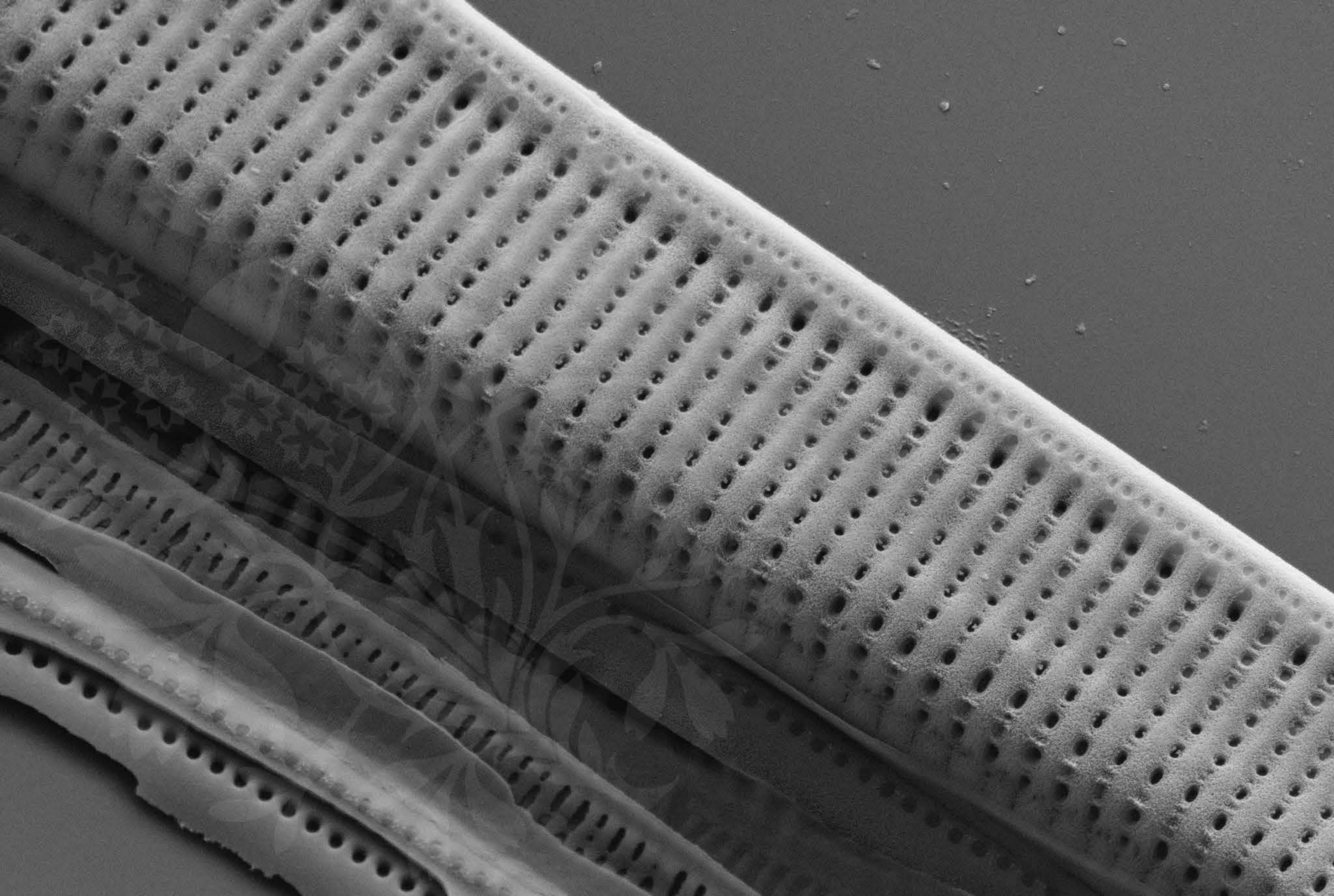
EHT = 5.00 kV

Signal A = SE2 Date :11 Nov 2015

WD = 4.3 mm

File Name = BC0469_14.tif





1 μm
|-----|

Mag = 20.00 K X

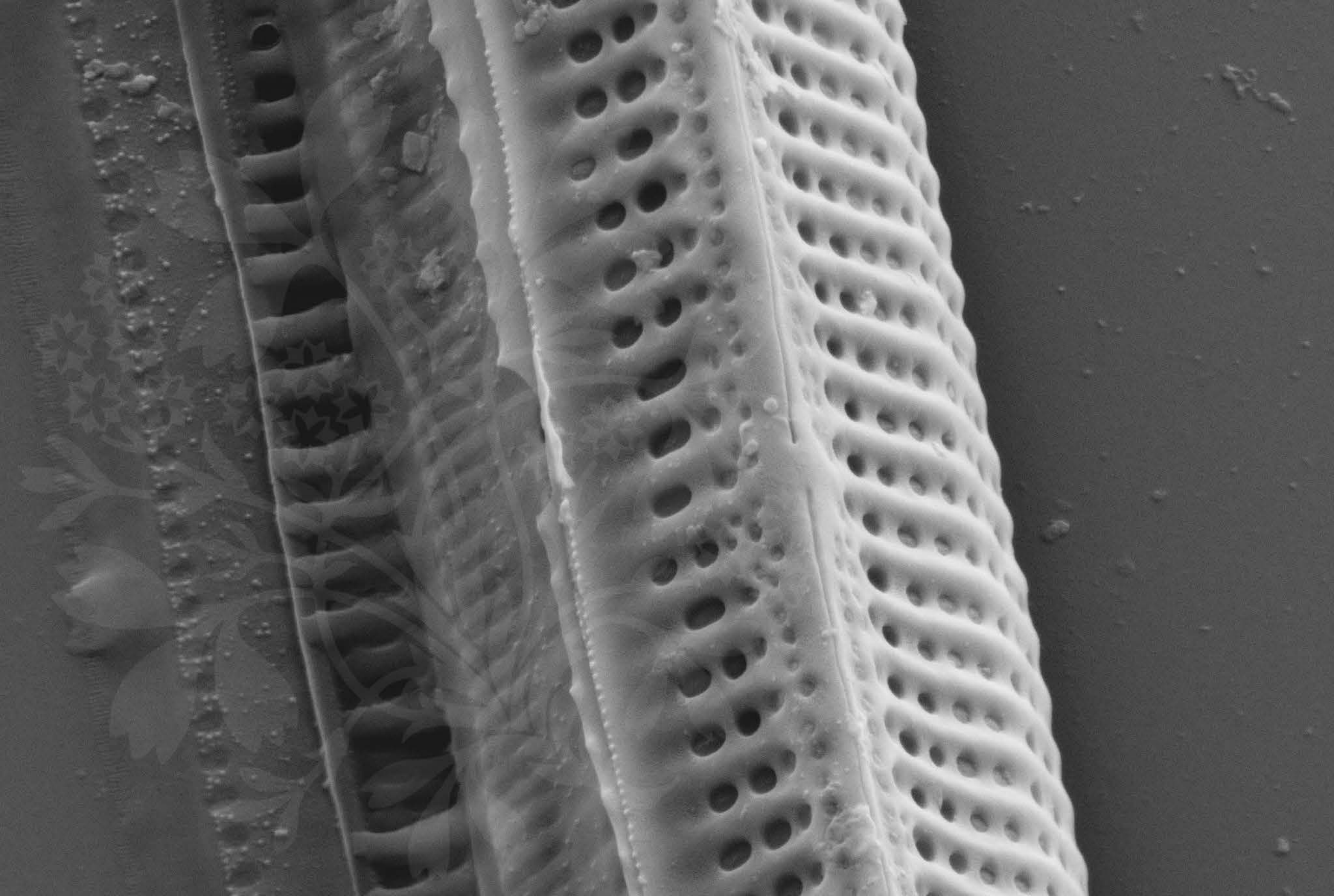
EHT = 5.00 kV

Signal A = SE2 Date :11 Nov 2015

WD = 4.3 mm

File Name = BC0469_15.tif





200 nm



Mag = 30.00 K X

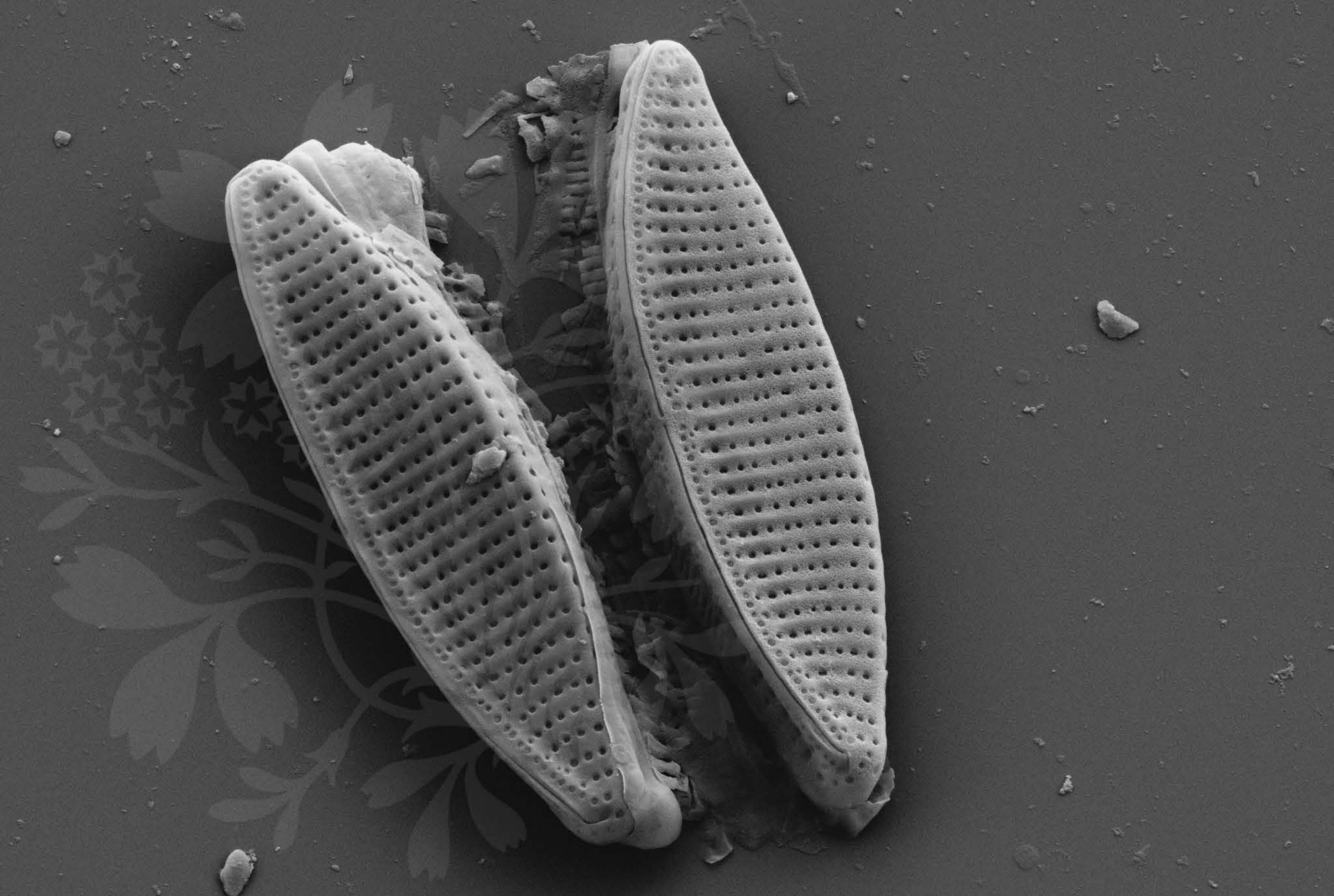
EHT = 5.00 kV

Signal A = SE2 Date :11 Nov 2015

WD = 4.3 mm

File Name = BC0469_16.tif





1 μm
|-----|

Mag = 12.00 K X

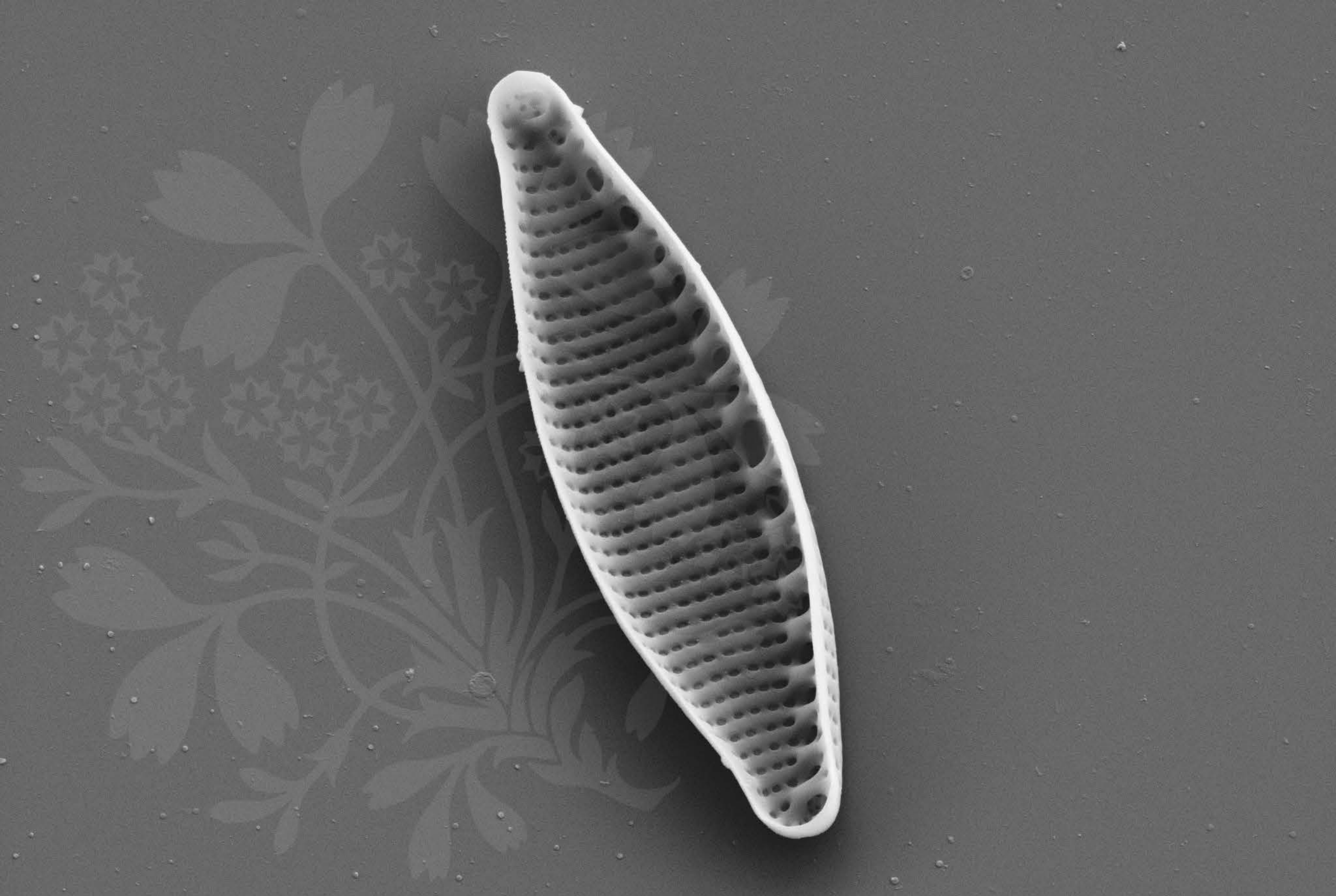
EHT = 5.00 kV

Signal A = SE2 Date :11 Nov 2015

WD = 4.3 mm

File Name = BC0469_17.tif





1 μ m
|-----|

Mag = 12.00 K X

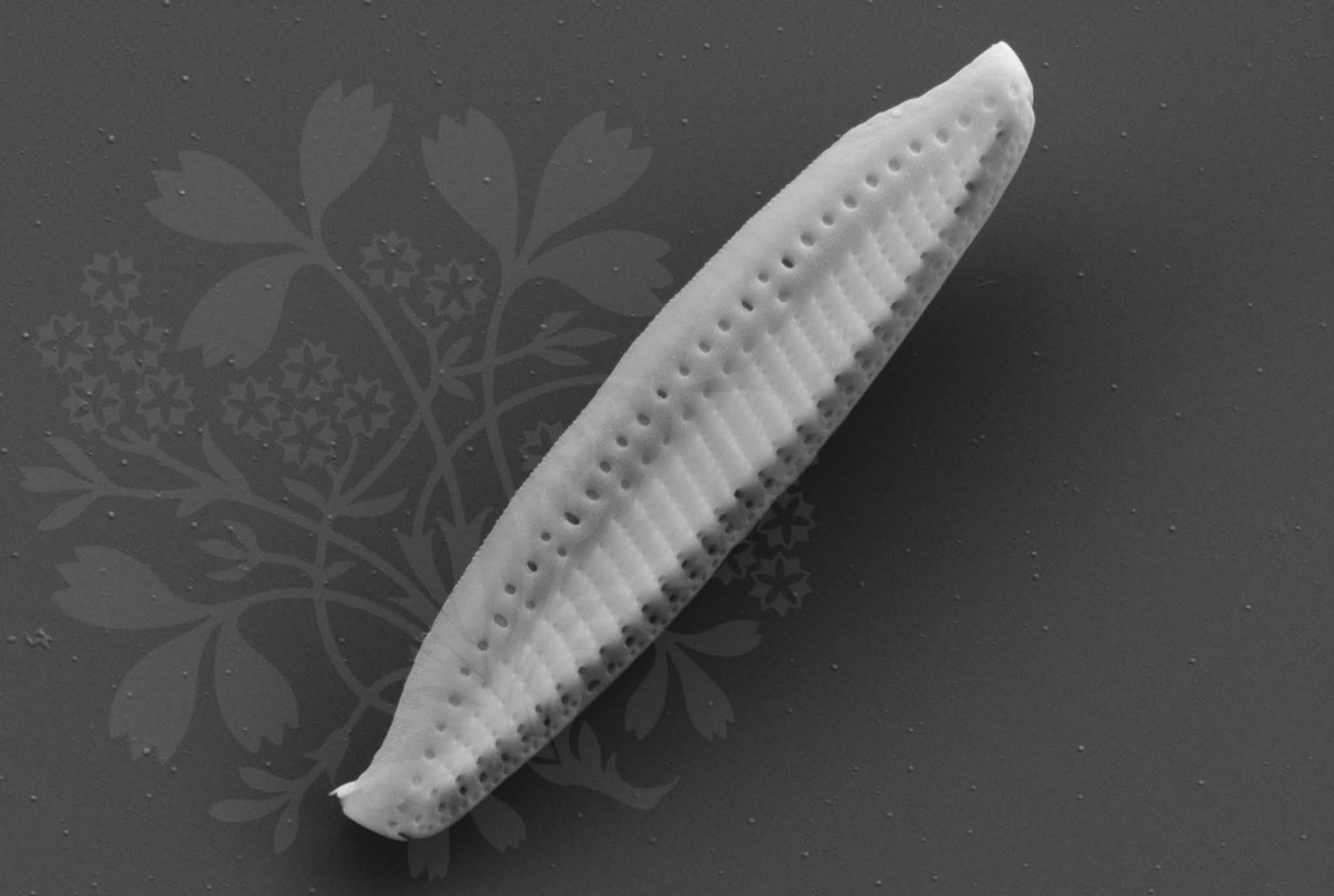
EHT = 5.00 kV

Signal A = SE2 Date :11 Nov 2015

WD = 4.4 mm

File Name = BC0469_18.tif





1 μm
|-----|

Mag = 15.00 K X

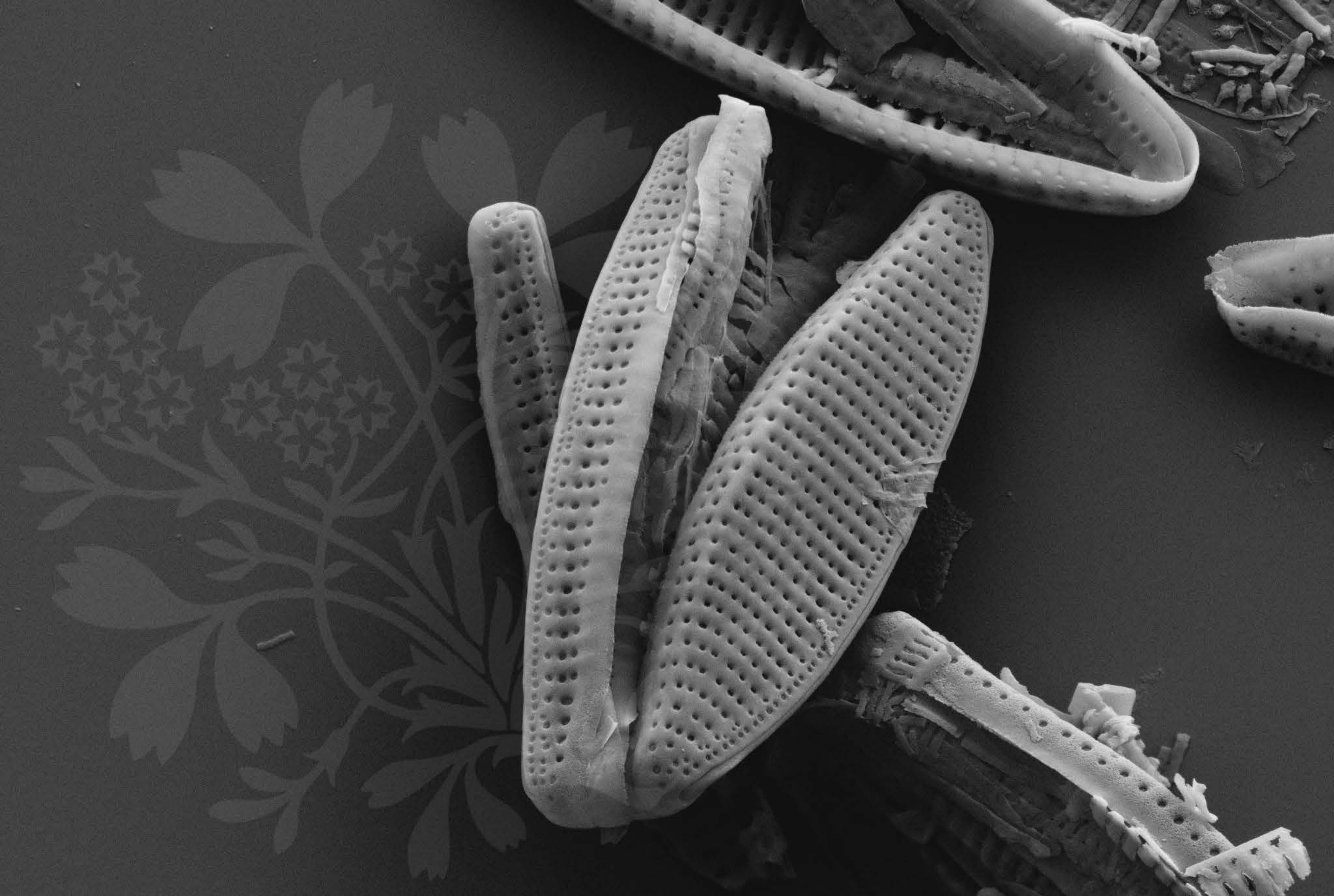
EHT = 5.00 kV

Signal A = SE2 Date :11 Nov 2015

WD = 4.3 mm

File Name = BC0469_19.tif





1 μ m
|-----|

Mag = 12.00 K X

EHT = 5.00 kV

Signal A = SE2 Date :11 Nov 2015

WD = 4.3 mm

File Name = BC0469_20.tif

